

# BLYTHE ROAD

BROOK GREEN W14









# BLYTHE ROAD

BROOK GREEN W14

An extremely spacious and beautifully presented three bedroom maisonette positioned over the ground and lower ground floor of this terraced house in Brook Green. The property was subject to complete renovation in recent years and benefits from three double bedrooms and three bathrooms, complimented by a large open plan kitchen, dining and reception area. Bi folding doors lead to the generous rear garden which enjoys excellent privacy for outdoor entertaining. This stylish maisonette boasts many unique features along with underfloor heating and extensive storage throughout. The sleek kitchen features modern fittings along with a centre island and range cooker.

Blythe Road runs through the heart of the Brook Green conservation area with local shops, restaurants, gastro pubs within a short walk. High Street Kensington and Holland Park are also a short walk away while public transport links can be accessed via Shepherd's Bush (Central line, London Overground & Southern Rail), Kensington Olympia (District line, London Overground & Southern Rail) and Hammersmith Broadway (District, Piccadilly and Hammersmith & City lines).



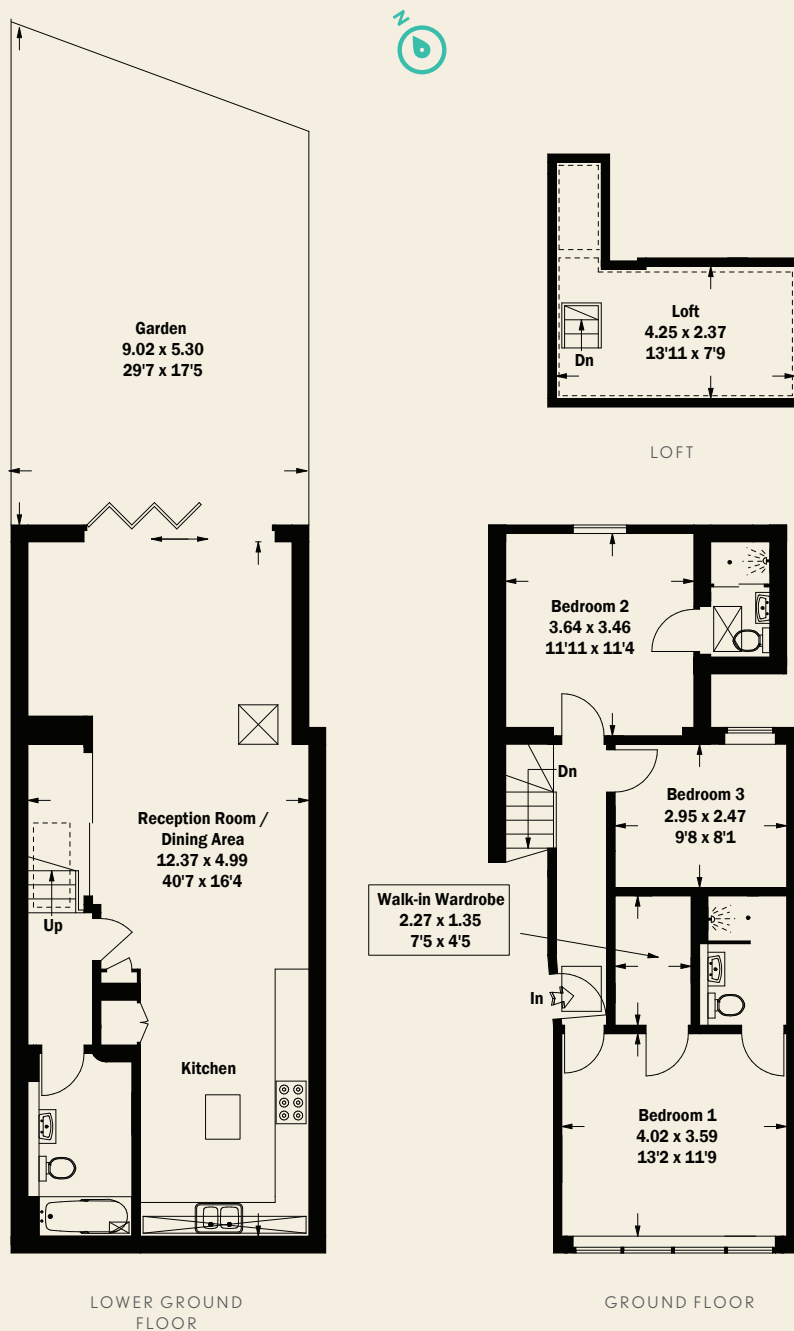
# BLYTHE ROAD

BROOK GREEN W14

CONSUMER PROTECTION FROM UNFAIR TRADING REGULATIONS 2008. THIS BROCHURE AND THE DESCRIPTIONS AND MEASUREMENTS HEREIN DO NOT CONSTITUTE REPRESENTATION AND WHILST EVERY EFFORT HAS BEEN MADE TO ENSURE ACCURACY, THIS CANNOT BE GUARANTEED.

**PRICE:** £1,150,000  
**TENURE:** SHARE OF FREEHOLD  
**GROSS INTERNAL AREA:** 125 SQ M/1,349 SQ FT APPROX.  
**LOCAL AUTHORITY:** ROYAL BOROUGH OF HAMMERSMITH & FULHAM  
**ENERGY RATING:** C

3 BEDROOMS, BATHROOM, 2 EN SUITE SHOWER ROOMS, OPEN PLAN KITCHEN/RECEPTION ROOM, WALK IN WARDROBE, LOFT STORAGE, GARDEN.



**BROOK GREEN**  
**T 020 7603 5181**  
59 BLYTHE ROAD LONDON W14 0HP  
**E BROOKGREEN@BECTIVE.CO.UK**

**WWW.BECTIVE.CO.UK**

**BECTIVE**  
-LESLIE MARSH-