



Eynham Road

NORTH KENSINGTON W12



EYNHAM ROAD

North Kensington W12

An elegant Edwardian garden flat in this particularly sought after and quiet corner of West London. Bright and spacious with a generously proportioned living area, the property is presented handsomely throughout and offers flexible accommodation with scope for further improvement. The property enjoys the benefit of a good sized garden and presently has the use of a communal green space beyond.

Eynham Road is a quiet tree lined road, within walking distance to the shops on North Pole Road and the popular Westfield Shopping Centre. White City underground station is within close proximity on the Central line.

PRICE:	£625,000
TENURE:	LEASEHOLD
LOCAL AUTHORITY:	HAMMERSMITH & FULHAM
GROSS INTERNAL AREA:	70 SQ M/754 SQ FT APPROX.
ENERGY RATING:	D

BEDROOM, BATHROOM WITH SEPARATE CLOAKROOM, RECEPTION ROOM, SITTING ROOM, KITCHEN, DINING ROOM, GARDEN, COMMUNAL GARDEN.

CONSUMER PROTECTION FROM UNFAIR TRADING REGULATIONS 2008. THIS BROCHURE AND THE DESCRIPTIONS AND MEASUREMENTS HEREIN DO NOT CONSTITUTE REPRESENTATION AND WHILST EVERY EFFORT HAS BEEN MADE TO ENSURE ACCURACY, THIS CANNOT BE GUARANTEED.

LADBROKE GROVE

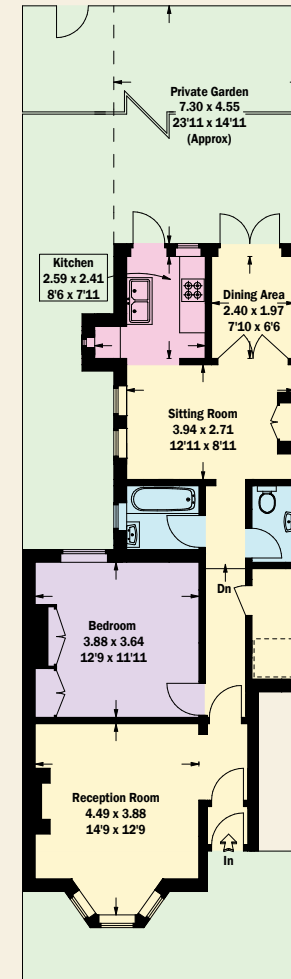
T 020 7221 0330

126 LABBROKE GROVE, LONDON W10 5NE

E CT@BECTIVE.CO.UK

-

WWW.BECTIVE.CO.UK



- Reduced headroom
below 1.5 m / 5'0

Ground Floor

BECTIVE
- LESLIE MARSH -