



Sydney Street

CHELSEA SW3



Sydney Street

CHELSEA SW3

Simply stunning. An imaginative conversion set with its own private walled garden and direct entrance from Bury Walk feeling private and discreet. Spacious and well appointed 2 bedroom 2 bathroom flat (1,036sq.ft) with fabulous open plan reception space set in this period building. Viewing is strongly recommended.

Sydney Street is a highly sought after location, close to the many amenities, shops, bars and restaurants of both the Kings Road and Fulham Road. The wonderful gardens of St Luke's Church are a short stroll whilst South Kensington underground station served by the District, Circle and Piccadilly lines is close by.





SYDNEY STREET

CHELSEA SW3

GUIDE PRICE:

£1,695,000

TENURE:

LEASE TERM FROM 25 MARCH 1979
& EXPIRING ON 24 MARCH 2978
PLUS SHARE OF FREEHOLD

GROSS INTERNAL AREA:

96.3 SQ M / 1,036 SQ FT APPROX.

LOCAL AUTHORITY:

RBK&C

ENERGY RATING:

C

2 DOUBLE BEDROOMS, EN SUITE SHOWER ROOM, BATHROOM,
RECEPTION ROOM, KITCHEN, WALLED GARDEN.

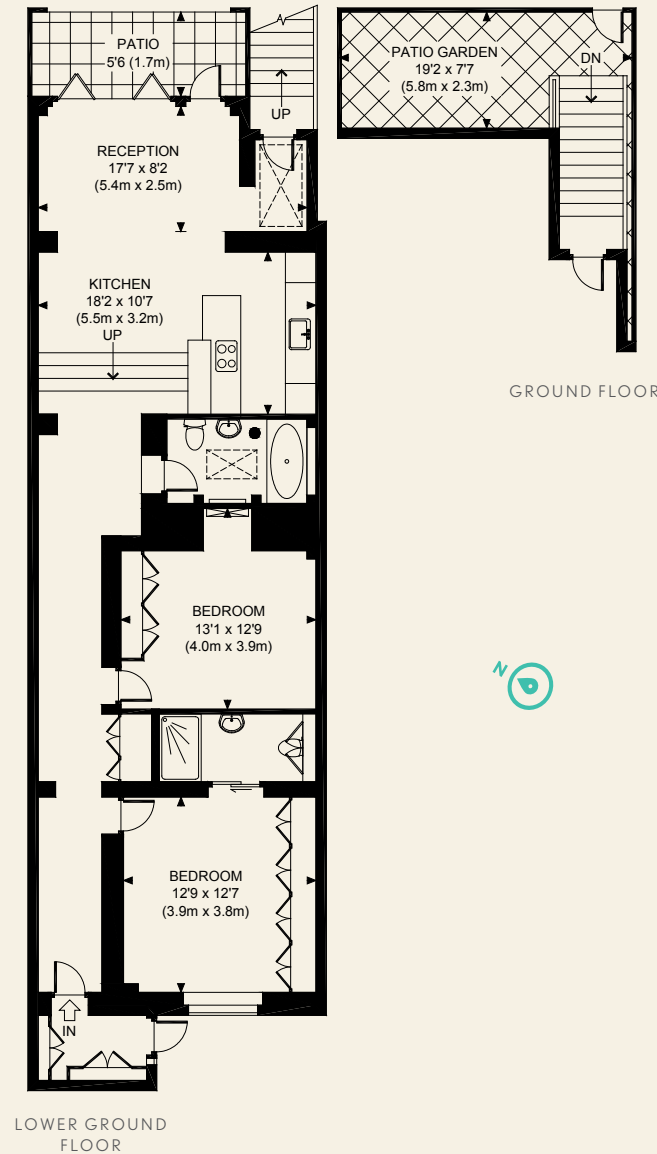
CHELSEA

T 020 7589 6677

1 CADOGAN STREET LONDON SW3 2PP

E CHELSEA@BECTIVE.CO.UK

WWW.BECTIVE.CO.UK



CONSUMER PROTECTION FROM UNFAIR TRADING REGULATIONS 2008. THIS BROCHURE AND THE DESCRIPTIONS AND MEASUREMENTS HEREIN DO NOT CONSTITUTE REPRESENTATION AND WHILST EVERY EFFORT HAS BEEN MADE TO ENSURE ACCURACY, THIS CANNOT BE GUARANTEED.

BECTIVE
- LESLIE MARSH -